



5 King Arthurs Drive

Strood ME2 3LZ

Price Guide £700,000



4



2



3



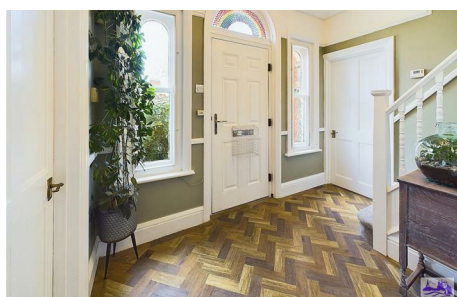
C

Virtual tour available. Welcome to King Arthurs Drive, Strood - a charming location for this most unique property built in 1926. This detached house boasts 4 good sized bedrooms, offering ample space for a growing family or those who love to entertain.

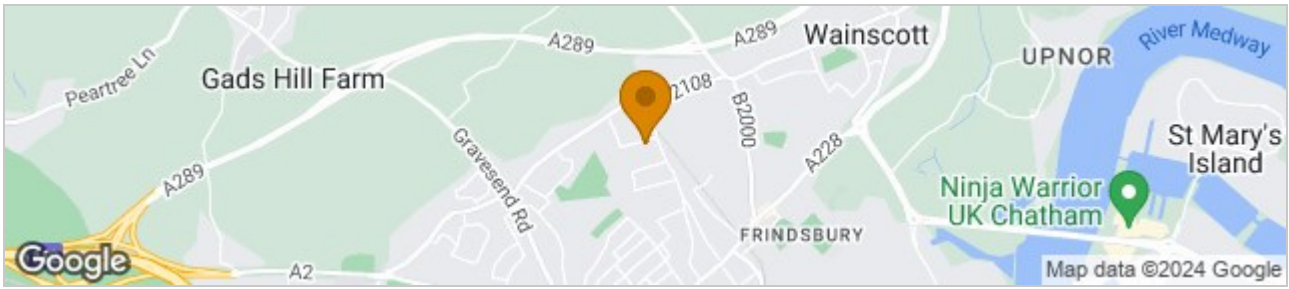
As you step inside, you are greeted by a welcoming hallway leading to not just one, but two lounges, providing flexibility for various living arrangements. The impressive extended kitchen/diner is a standout feature, perfect for hosting gatherings or simply enjoying family meals. The generous amount of cupboards ensures that storage will never be an issue, while the stylish design adds a touch of elegance to the space. One of the highlights of this property is the beautiful and spacious rear garden, complete with fantastic patio area and an immaculate lawn. Imagine spending sunny afternoons relaxing in this serene outdoor space, a rare find in the heart of Strood. A huge benefit tucked away at the rear of the garden is a beautiful garden building, the perfect place for a home office, or for your teens to hang out or even for over night guests. Additionally, there is a garage plus a drive offering parking for 2 cars, making coming home a breeze.

With four bedrooms and a spacious landing, there is no shortage of room for everyone to have their own space. Whether you're looking for a peaceful retreat or a place to host friends and family, this property has it all. Don't miss the opportunity to own a piece of history with this character-filled home on King Arthurs Drive. Book a viewing today and step into a world of charm and comfort.

EPC rated C, Council tax band F



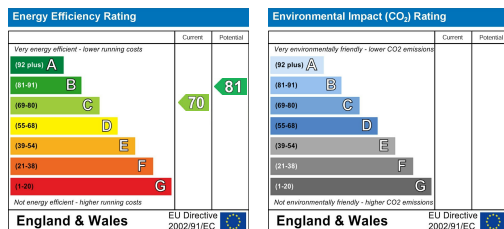
Area Map



Floor Plans

<p style="text-align: center;">Ground Floor Building 1</p>	<p style="text-align: center;">Floor 1 Building 1</p>	<p>Approximate total area⁽¹⁾ 1832.88 ft² 170.28 m²</p>
<p style="text-align: center;">Ground Floor Building 2</p>	<p style="text-align: center;">(1) Excluding balconies and terraces</p> <p style="text-align: center; font-size: small;">While every attempt has been made to ensure accuracy, all measurements are approximate, not to scale. This floor plan is for illustrative purposes only.</p> <p style="text-align: center; font-size: x-small;">GIRAFFE360</p>	

Energy Efficiency Graph



These particulars, whilst believed to be accurate are set out as a general outline only for guidance and do not constitute any part of an offer or contract. Intending purchasers should not rely on them as statements of representation of fact, but must satisfy themselves by inspection or otherwise as to their accuracy. No person in this firm's employment has the authority to make or give any representation or warranty in respect of the property.

159 High Street, Strood, Rochester, Kent, ME2 4TH

Tel: 01634 735335 Email: justine@medwaymortgageshop.co.uk <https://www.medwaymortgageshop.co.uk>